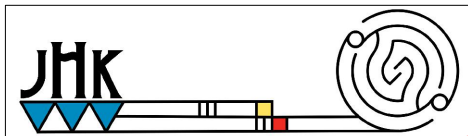




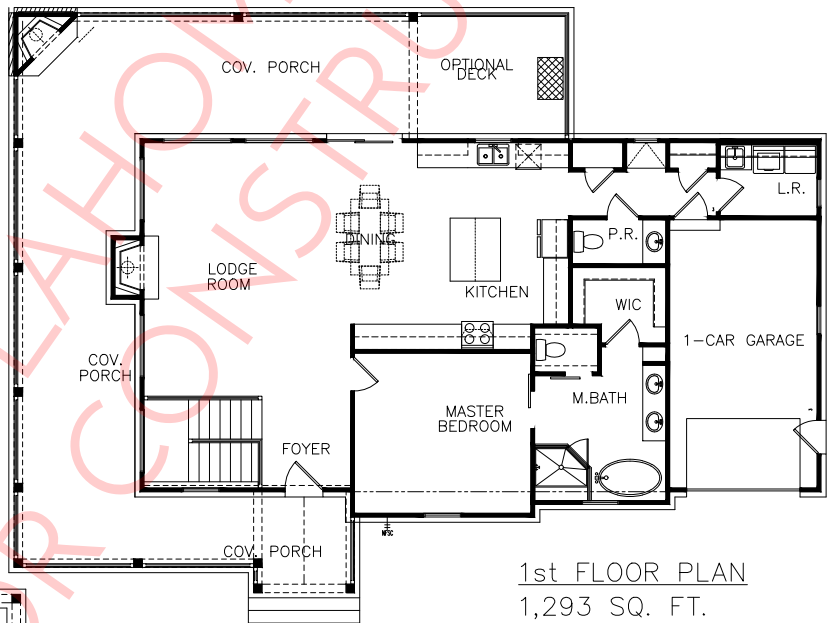
FRONT ELEVATION

MULBERRY CTG.

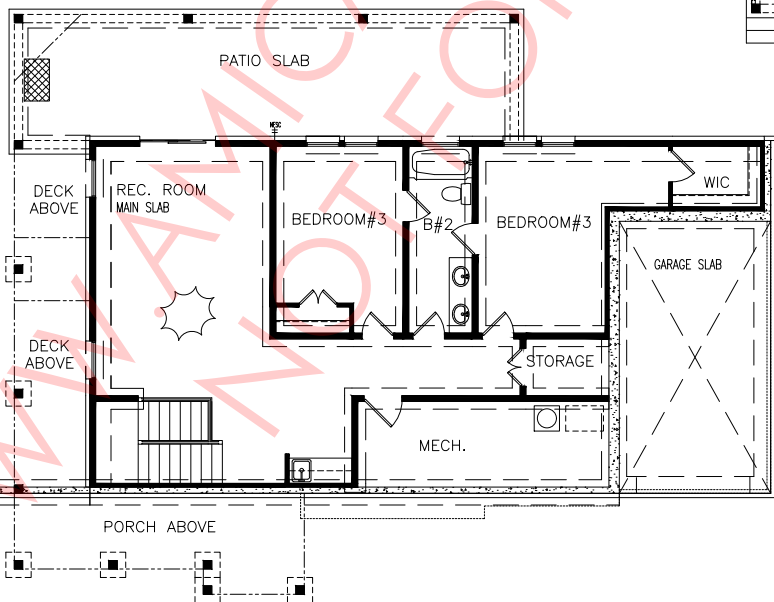
PLAN #JHK19048 2,260 SQ.FT.
WIDTH ±64'-0"
DEPTH ±46'-0"
FOUNDATION: BASEMENT



James H. Klippel Residential Designs, LLC
770.315.7524 | jhklippel@gmail.com
www.jhkdesigns.com



1st FLOOR PLAN
1,293 SQ. FT.



BASEMENT PLAN
967 SQ. FT.

ARTIST'S CONCEPTION MAY VARY FROM ACTUAL PLAN

JAMES H. KLIPPEL RESIDENTIAL DESIGNS, LLC

