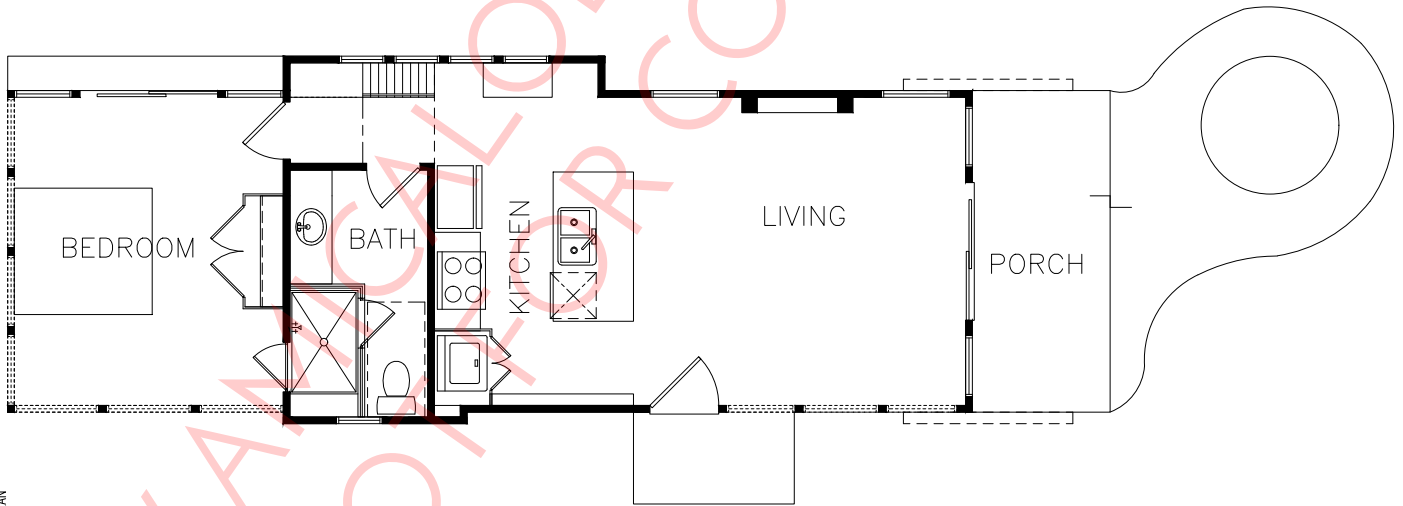
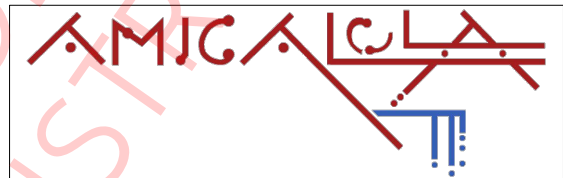


FRONT ELEVATION

ROLL CAST DWELLING

PLAN #JHK19057
WIDTH ±48'-0"
DEPTH ±16'-1"
FOUNDATION: SLAB

613 SQ.FT.



1ST FLOOR PLAN
613 SQ. FT.

ARTIST'S CONCEPTION MAY VARY FROM ACTUAL PLAN

JAMES H. KLIPPEL RESIDENTIAL DESIGNS, LLC

