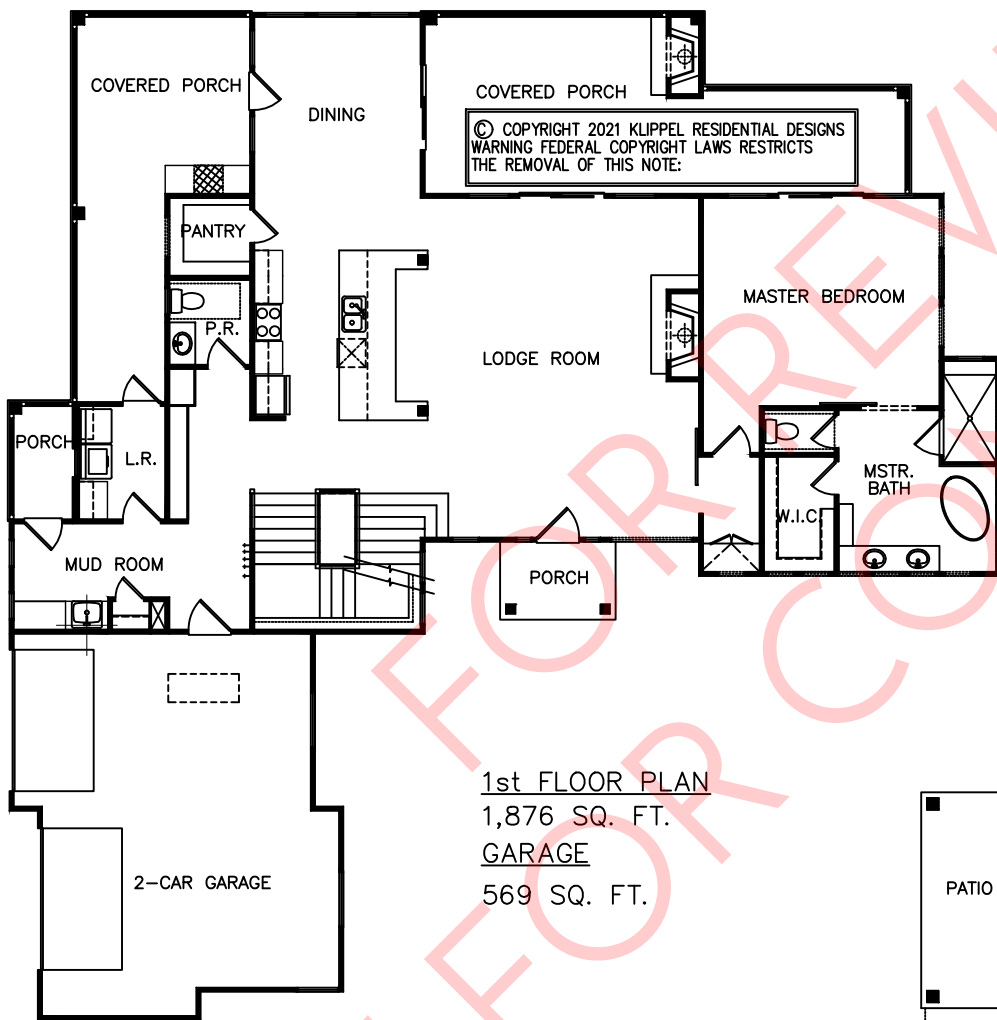




© COPYRIGHT 2021 KLIPPEL RESIDENTIAL DESIGNS
WARNING FEDERAL COPYRIGHT LAWS RESTRICTS
THE REMOVAL OF THIS NOTE.

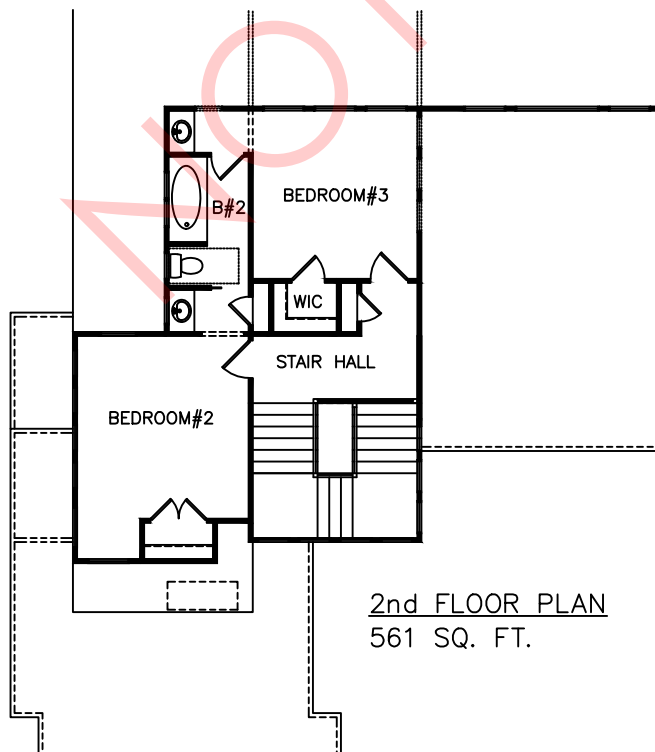
WWW.AMICALOLAHOMEPLANS.COM



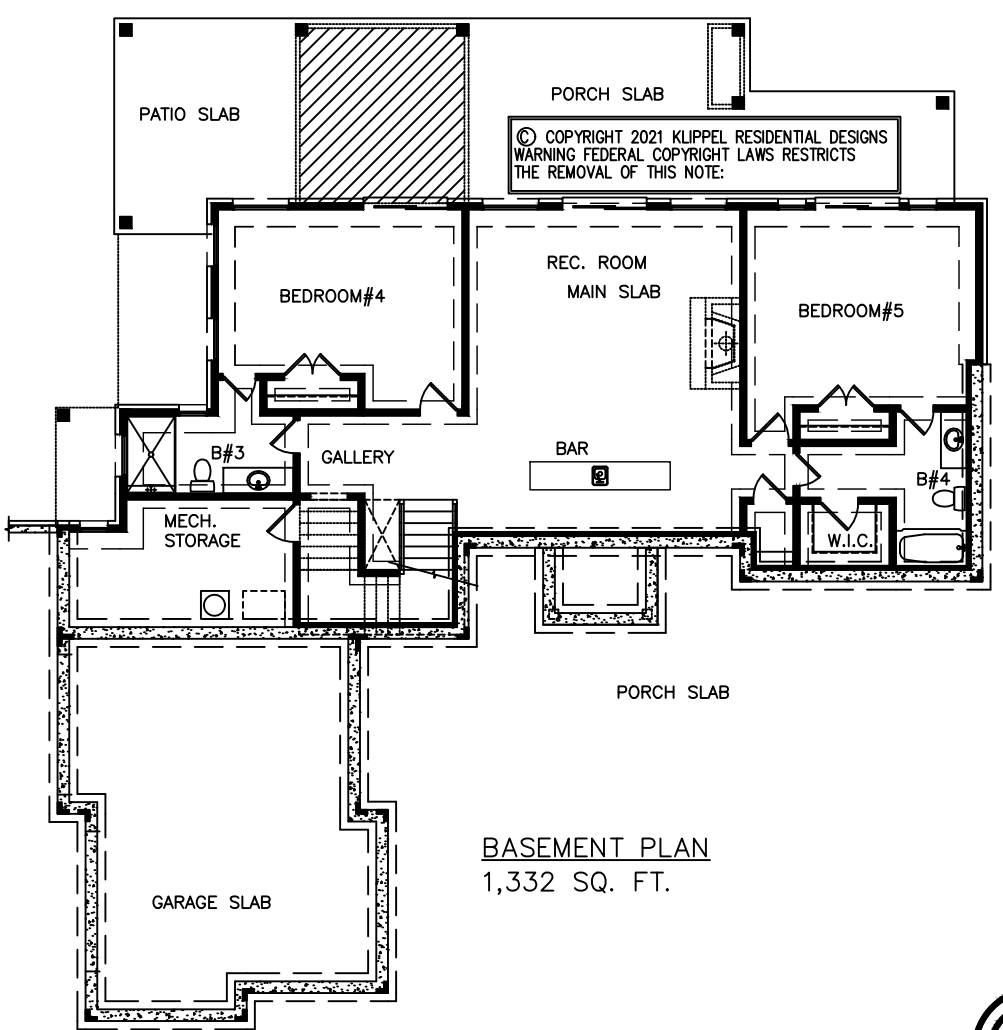
1st FLOOR PLAN
1,876 SQ. FT.
GARAGE
569 SQ. FT.

THE CASCADE

PLAN #JHK20017 2,437 SQ.FT.
WIDTH ±70'-0" +1.332 SQ.FT. BASEMENT
DEPTH ±71'-2"
FOUNDATION: BASEMENT/CRAWL
BEDROOMS: 3 (5 W/ BASEMENT)
BATHROOMS: 2.5 (4.5 W/ BASEMENT)
GARAGE: 2 CAR
PORCHES: 605 SQ. FT.



2nd FLOOR PLAN
561 SQ. FT.



BASEMENT PLAN
1,332 SQ. FT.

ARTIST'S CONCEPTION MAY VARY FROM ACTUAL PLAN

AMICALOLA HOME PLANS

